

## Inner Cone Busbar Kits

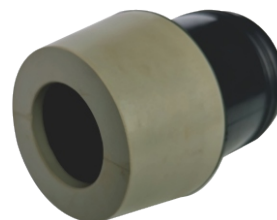
Inner cone busbar kits are suitable for the combined connection of ring main units to supply more branches for extension. Meanwhile, it is a prior option to combined ring main units.



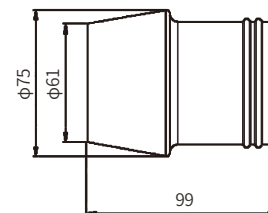
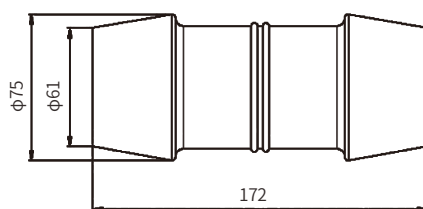
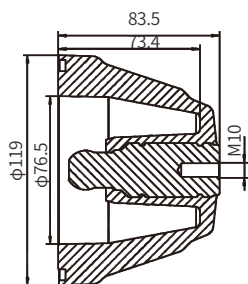
Inner Cone Busbar Insulator  
Part No. WNML2-24



Inner Cone Busbar Connector  
Part No. WNML2-24



Inner Cone Busbar Plug  
Part No. WNMLD2-24



Dimension: mm

### Technical Data

Item	Busbar Connector and Kits
Voltage Class	24kV
Rated Current	630A
AC Withstand Voltage	80kV for 1min
Partial Discharge	20kV, ≤10pC
Impulse Withstand Voltage (15 times for each polarity)	125kV
Screen Resistance	≤5000Ω
Temperature rise	≤65K